

# GRABSAFE®

LADDER RUNG CONTINUATION GRIPS

Patent No's. Apply  
6,095,283; 6,347,685;  
6,619,428

GRABSAFE® Clamps  
Securely In Place in  
Minutes. Fits Ladder Rails  
up to 3" deep.

Available in **Clamp-on** or  
**Weld-on** Models.

Finishes:

- Powder Coat Safety Yellow
- Hot-dip Galvanized



GRABSAFE®, Ladder  
Rung Continuation Grips.

Provides Horizontal Grab  
Bars, similar to ladder  
rungs, for a reliable grip  
to the top of the ladder.

Get a Grip  
on Your Ladder  
Safety.



306 Country Club Drive  
Wilmington, DE 19803-2920  
Phone: (302) 571-8470  
Fax: (302) 571-0756  
[www.FallSafety.com](http://www.FallSafety.com)  
Email: [dsc@FallSafety.com](mailto:dsc@FallSafety.com)

# GRABSAFE®

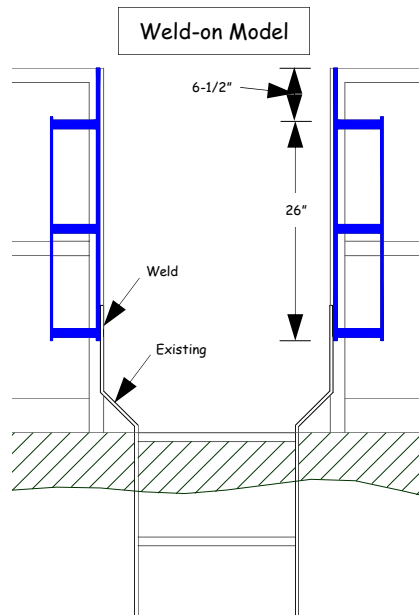
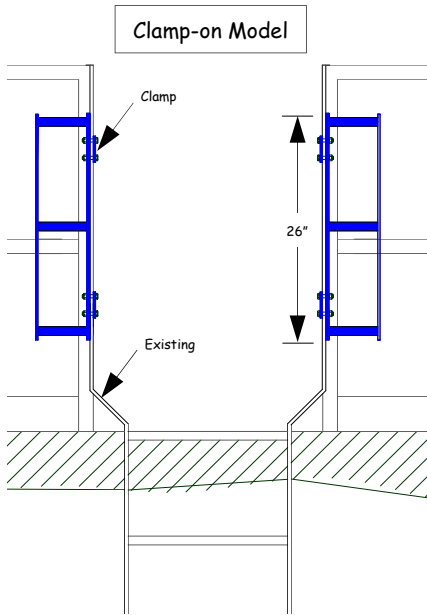
LADDER RUNG CONTINUATION GRIPS

Patent No's. Apply  
6,095,283; 6,347,685;  
6,619,428

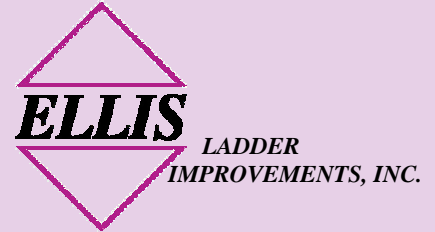


Horizontal Grips provide the only sure grip when you run out of ladder rungs.

GRABSAFE® has large grab bars for a secure grip, even with gloved hands.



- Choose the model that is right for you. **Clamp-on or Weld-on GRABSAFE® works on either straight or flared ladder side rails.**
- For Retro-fit, simply bolt on the Clamp-on Model or cut off your ladder extensions and weld in the Weld-on Model.
- Having New Ladders Fabricated? Tell your Metals Contractor to add our GRABSAFE® to your ladder during fabrication.



306 Country Club Drive  
Wilmington, DE 19803-2920  
Phone: (302) 571-8470 Fax: (302) 571-0756  
www.FallSafety.com  
Email: dsc@FallSafety.com

The GRABSAFE® provides horizontal grab bars to step through ladders portion of your fixed ladders. GRABSAFE® gives personnel horizontal hand holds to ascend or descend the full height of a fixed ladder.

Only horizontal grip members are reliable to sustain a fall of the body if the foot slides off the rung for any reason. If a vertical member is held, no matter what the shape of the side rail or the strength of grip, the force of falling causes the hand to slide, producing an impact with the next rail obstruction, which causes release of the handhold and a resulting fall.

The GRABSAFE® is available in Two Models:

1. **Model GBS-CLMP (Clamp-on):**
  - Simply utilize the provided hardware and bolt to your existing ladder side rails.
  - Fits flat stock side rails up to 3" wide and virtually any thickness (Fasteners Furnished for 3/4" thickness).
2. **Model GBS-WELD (Weld-on):**
  - Simply welds to your existing ladder or any new ladder construction.
  - Provides extended rail for tie-back to existing standard railings.

Once you have climbed a ladder with GRABSAFE®, you won't climb one without it.